



# FALCO CUP 2020

## Bulletin (preliminary)

TRAIL ORIENTEERING  
PreO (short)  
PreO Sprint; TempO  
PreO (long)

24-26 April, 2020, Rykantai, Lithuania



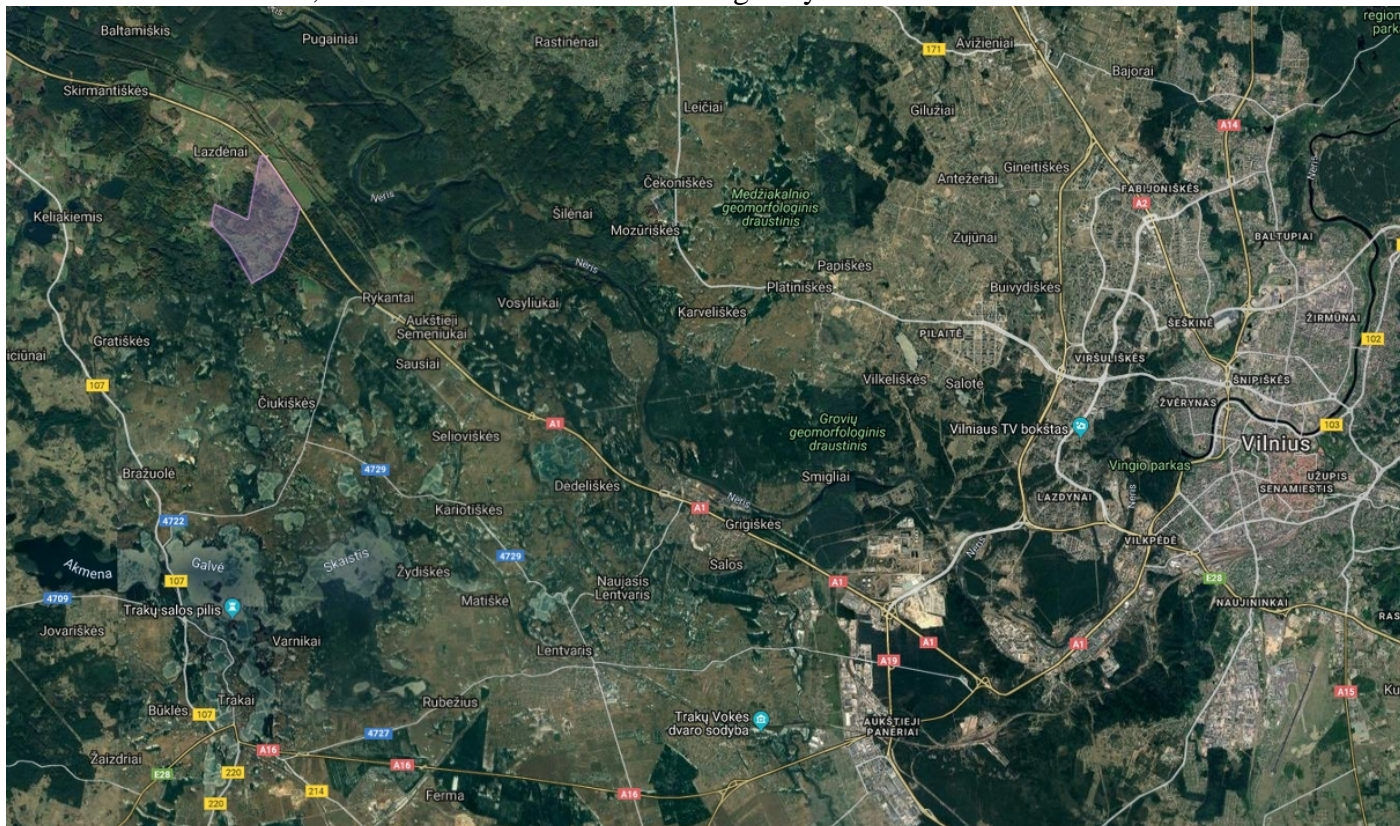
## Event program

<i>Time</i>	<i>Event</i>	<i>Place</i>
<b>April 24 (Friday), 2020</b>		
15:30 – 17:30	Arrival, Registration	
16:00 – 18:00	<b>PreO short course</b>	
<b>April 25 (Saturday), 2020</b>		
10:30 – 13:00	Arrival, Registration	
11:00 – 13:00	<b>PreO Sprint course</b>	
14:30 – 17:00	Arrival, Registration	
15:00 – 17:00	<b>TempO course (WRE?)</b>	
<b>April 26 (Sunday), 2020</b>		
10:30 – 11:00	Arrival, Registration	
11:00 – 13:00	<b>PreO long course (WRE?)</b>	
16:00	Prize giving and Closing ceremony	

All times are preliminary and April be changed. Please find the latest information at:

<http://www.oskfalco.lt/falco-cup-2020/>

<https://www.google.com/maps/d/viewer?mid=1Hw2ymZ1w4HmHBo8j2cR1pAlb0p386dcB&usp=sharing>  
Near Vilnius and Trakai, in close with Vilnius-Kaunas highway.



## Classes

Results will be calculated in such classes:

Open (O)

Para (P)

Junior (J) – born 2002 and later.

All courses are the same for all classes.

## Result calculation and prizes

Total PreO courses results will be calculated as sum of 2 days PreO courses (short and long).

PreO Sprint course results will be calculated as ordinary PreO course and with time spent at course instead of Time controls. There will be time limit calculated 1min for each control plus 1min for each 100m. Minus 1 point for each up till second late at finish.

Total Falco Cup result will be calculated: 60 seconds penalty for each wrong answer at PreO courses (short and long) and Preo Sprint course plus TempO time and plus PreO and PreO Sprint times.

First 3 competitors in Total PreO and TempO and PreO Sprint courses and all classes will be awarded with event medals.

First 3 competitors in all Total Falco Cup classes will be awarded with event cups and prizes.

## Registration and start fee

Please send the information with Name, Surname, class and club (country) to:

[oskfalco@gmail.com](mailto:oskfalco@gmail.com)

Course price (EUR)	up till April 20	
	Adult	Junior
PreO 1	10	5
PreO Sprint	10	5
TempO (WRE)	15	7.50
PreO 2 (WRE)	15	7.50
<b>All courses:</b>	<b>50</b>	<b>25</b>

Payment will be acceptable in cash at competition event center or by bank transfer (to be received up till 20<sup>th</sup> of April).

## Start lists

Preliminary start list of first day will be published a week before competitions.

Adjusted final start list of each day will be published a day before competition day. Competitors that will be late at their start point or with late registration will have the opportunity to start after published start list ends at free order.

Please contact us directly for start list corrections (early or late start times).

## Assistants

There will be some assistants at for those who will need. Paths are expected of good quality but there will be some elevation to overcome. We will be grateful for your early information on assistant needs. Competitor's own assistants are permitted.

## Terrain and maps

Mature forest with different visibility, open and semi-open terrain with middle sized land forms.

**All maps:** 1:4000, contour interval 2,5m, size A4, waterproof, mapped at August-October 2019, revised at March 2020 by Andrius Jovaiša. Laser scan contours (0.5m) will be used in mapping process and will be visible at solution maps. In some places (green on yellow) there are no dots representing distinct vegetation boundary (ISSOM 416) for better map reading.

## Punching

Most likely SportIdent will be used for punching and time control.

## Courses

Preliminary course parameters and distances:

PreO short: 0,6-1,2km, 18-22 controls,

PreO long: 1,0-2,2km, 26-28 controls.

PreO sprint: 0,1-0,5km, 12-15 controls (only A/Z answers), time limit: 1min./control.+1min./100m.

TempO: 5-6 stations, with 5 tasks each.

**In most cases decisions should be made by map reading.**

*Mapper and course setter:* Andrius Jovaiša

*IOF Event Adviser:* Zita Rukšane (Latvia)

## Zero tolerance

Zero answer is possible if the nearest flag is set at least **5 meters away from the correct position or another similar object is used**. For long distance solutions Zero tolerance will be reasonably more.

No Zero answers for a flags on a point feature using angle less than 135°.

The same Zero tolerance rules will be used at all courses.

## Event organizer:

**OSK "Falco"**

Melyniu str. 8, LT-53433, Vilemu k., Kauno raj., LITHUANIA; e-mail: [oskfalco@gmail.com](mailto:oskfalco@gmail.com)

**Account :** LT797044060007814548 **Bank:** AB SEB bankas, SWIFT: CBVILT2X; BIC: 70440

Person in charge: Andrius Jovaiša

Phone: +370 68788771, [andrius.jovaisa@gmail.com](mailto:andrius.jovaisa@gmail.com)